



What is PATH NC?

- The Partnership and Technology Hub for North Carolina (PATH NC) is a **technology platform for NC child welfare staff** that will support their efforts in promoting the safety, permanency, and well-being of children and families.
- With **validated decision-support tools**, PATH NC will empower staff at all levels to use safety-organized, strength-based, and child/family-centered practices.
- PATH NC will streamline data collection with **an intuitive, user-friendly, and mobile-friendly interface**.
- The system will **integrate critical information** throughout the full life of each case.
- Using data entered by child welfare staff, along with information from partnering agencies, the system will provide **essential reports, dashboards, and analytics**. These data tools will equip local and state child welfare leaders for improved oversight and accountability.
- Additionally, PATH NC will help to achieve **compliance with federal mandates** such as the Child and Family Services Review (CFSR), Title IV-E, and all required federal reporting.
- PATH NC will be built to comply with the Comprehensive Child Welfare Information System (CCWIS) standards and it will be **NC's single statewide system for child welfare**.

What modules, capabilities, and services will be included in PATH NC?

MODULES

- CPS Intake
- CPS Assessments
- CPS In-Home Case Management
- Permanency Planning Case Management
- Foster Care Placements
- Eligibility (IV-E, FFPSA)
- Financials
- Foster Home Recruitment and Licensing
- Adoption and Adoption Assistance

CROSS-FUNCTIONAL CAPABILITIES

- Person Search, Match, and Registration (CNDS Integration)
- Reports, Dashboards, Analytics
- Content Management (Taxonomy for Documents, Audio, and Video)
- Mobile App with Offline Sync
- Global Search with Dynamic Free Text Capabilities
- Provider and Family Portals
- Chat bots for policy questions and case discovery
- External Interfaces with NC Medicaid, Department of Public Instruction, and other contributing partners
- Structured Decision-Making (SDM) tools and other practice model supports
- Dynamic custom case prints with ability to redact

SUPPORTS AND SERVICES

- Readiness, Training (Virtual & Instructor-Led), and Ongoing Self-Paced Web-Based Trainings (WBTs)
- Help Desk Support
- Data and document conversion from state and local county systems
- Responsive Development Team to make ongoing system changes and improvements
- Digital-First Communications Hub (DFC) with audience targeting and surveys



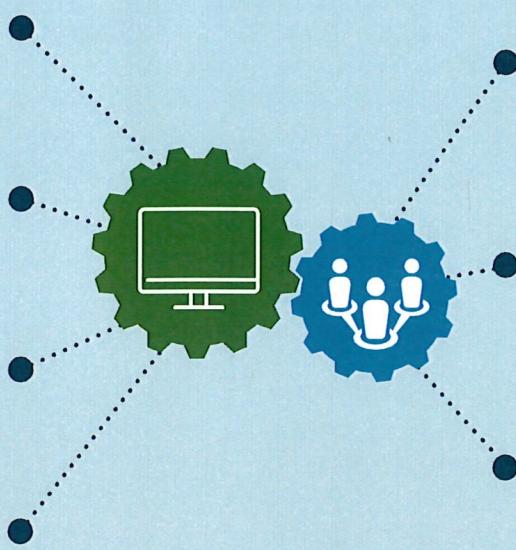
PATH NC Guiding Principles

Safety and well-being of children, families, and NC Child Welfare staff are of the greatest importance

Create a system that is **easy and intuitive to use** and efficiently manages **data and documents**.

Create a system that child welfare workers can access and **use 24/7 from a broad set of supported devices**.

Whenever possible, **data should only be entered once** and used many times.

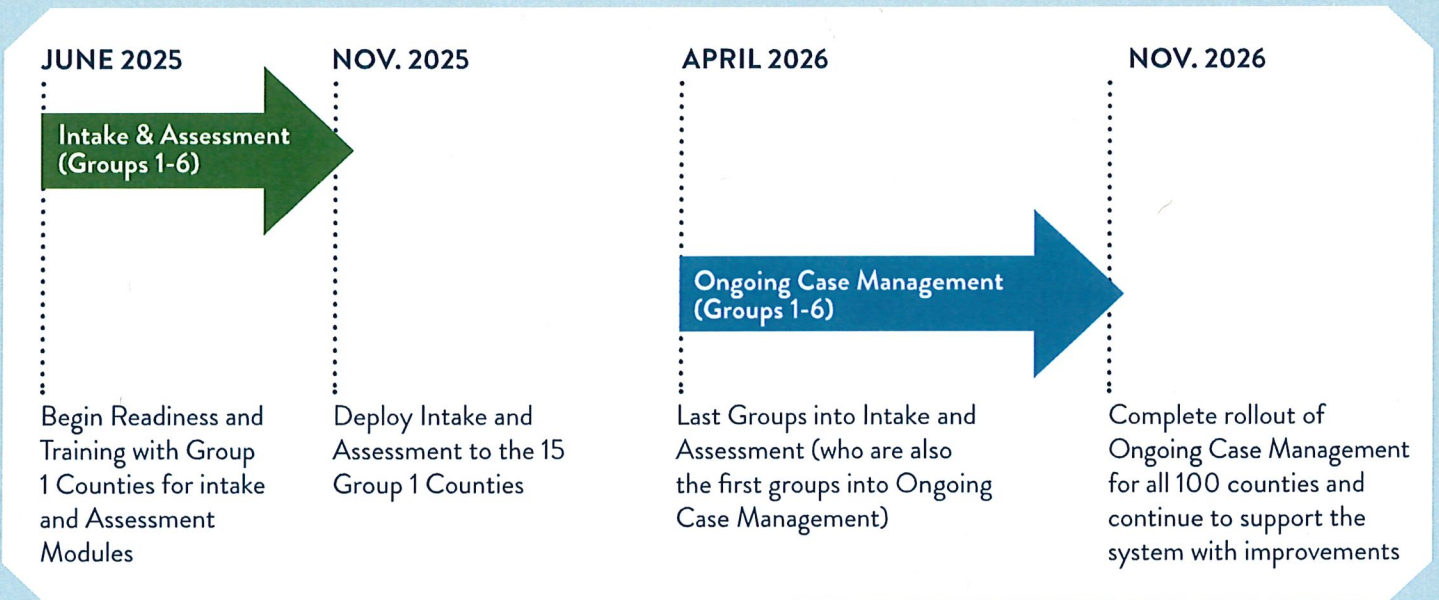


Ongoing **training and support** for the model of practice, the system, and changes will be **aligned to maximize the quality** of service provided.

County and state representatives must be partners and active participants committed to reach consensus at every step of the process.

Counties vary in size, complexity, and available resources. While any system will require some standardization, we must build a system that works for ALL counties.

Projected PATH NC Deployment Timeline (AS OF JANUARY 2026)



IMPORTANT NOTICE: For counties considering investments in local child welfare technology platforms going forward, please be advised that use of PATH NC will be mandatory for all counties, and expenditures on alternative local systems that duplicate PATH NC functionality will not be eligible for state or federal revenue. Local technology systems that duplicate capabilities or result in inconsistent use of PATH NC will need to be decommissioned as counties transition onto the new platform.

There will be no county costs for software licensing or data/document storage related to PATH NC, allowing counties to reinvest savings from local technological investments into other areas of need.





NC DEPARTMENT OF
**HEALTH AND
HUMAN SERVICES**

JOSH STEIN • Governor

DEV DUTTA SANGVAI • Secretary

LISA TUCKER CAULEY • Division Director, Human Services

February 26, 2026

DEAR COUNTY DIRECTORS OF SOCIAL SERVICES

ATTENTION: DIRECTORS, CHILD WELFARE PROGRAM MANAGERS, COUNTY CHAMPIONS, COUNTY IT TEAM

SUBJECT: UPDATED PATH NC IMPLEMENTATION TIMELINE FOR 2026

REQUIRED ACTION: Information Only Time Sensitive Immediate

PURPOSE: To provide local county child welfare agencies with the county groupings and implementation plans for the Ongoing modules of the Child Welfare Partnership and Technology Hub for North Carolina (PATH NC).

NCDHHS is pleased to share that 89 counties have successfully implemented PATH NC for Intake and Assessments. As we move into rollout for Ongoing Case Management and other modules, the department has reassessed the implementation plan for 2026 to ensure a smooth transition.

NCDHHS is committed to rolling out a strong, usable product that effectively supports county staff in doing their work. To accomplish this goal, it is necessary to move the Go Live Dates and to compress from seven rollout groups to six. The following adjustments have been made to the groupings:

- The 11 counties using the full functionality in the current Cúram-based CWIS will implement the I&A AND the Ongoing modules all together as the PATH NC Group 1 Ongoing pilot group.
- The 14 counties that were part of Group 1 for Intake and Assessments will be moved to the Ongoing grouping that best fits their region.

The lists of each rollout group and projected timeline can be found in the attached materials. This information has been shared with the 11 Pilot Counties, the Unified Leadership Team, and with the Joint State County Relations Committee of the North Carolina Association of County Directors of Social Services. Additionally, we have attached the updated PATH NC Fact Sheet with additional information on the features and components of the statewide system.

Ongoing Rollout

NC DEPARTMENT OF HEALTH AND HUMAN SERVICES • DIVISION OF SOCIAL SERVICES

LOCATION: 1915 Health Services Way, Raleigh NC 27607

MAILING ADDRESS: 2408 Mail Service Center
Raleigh, NC 27699-2410

www.ncdhhs.gov • Main Tel. (919) 527-6393

AN EQUAL OPPORTUNITY / AFFIRMATIVE ACTION EMPLOYER

NCDHHS will begin implementation of PATH NC for all Ongoing modules beginning February 2026. See below for planned Go-Live dates for each Rollout Group.

- Group 1: April 27, 2026
- Group 2: June 8, 2026
- Group 3: July 20, 2026
- Group 4: August 31, 2026
- Group 5: October 12, 2026
- Group 6: November 30, 2026

Group 1 has already begun Readiness Assessment meetings with PATH NC Readiness Liaisons to prepare them for Go Live. As we move toward rollout for subsequent groups, kick-off meetings will be scheduled with each group to initiate the readiness process, which will include change management activities, training, go-live support, and post-go-live support.

Sincerely,



Rob Morrell
Director
Human Services Business & Analytics (HSBIA)

Cc: Mike Leighs, Deputy Secretary for Opportunity and Well Being
Lisa Tucker Cauley, Division Director, Human Services
Adrian Daye, Deputy Director for Child Welfare Practice
Donna Fayko, Deputy Director for Child Welfare Operations
William "Ben" Rose, Lead Regional Director
Jennifer Oshnock, Child Welfare Business Manager, HSBIA
Peter West, Section Chief, PATH NC Implementation Lead

Attachments:
Roll Out and Training Dates
PathNC Factsheet
Ongoing Grouping

CWS-14-2026

	Current	New		
Group	Go Live	Go Live	SDM Tool Training	PATH NC Training
1	2/23/2026	4/27/2026	03/03/2026	03/30/2026
2	4/6/2026	6/8/2026	04/07/2026	05/11/2026
3	5/18/2026	7/20/2026	05/19/2026	06/22/2026
4	6/29/2026	8/31/2026	06/30/2026	08/03/3036
5	8/10/2026	10/12/2026	08/11/2026	09/14/2026
6	9/21/2026	11/30/2026	09/22/2026	10/26/2026