

[DATE]

Tracy Swartout
Superintendent, Blue Ridge Parkway
199 Hemphill Knob Road
Asheville, NC 28803

Re: Letter of Support for NPS Land Acquisition Opportunity

Dear Ms. Swartout,

I am writing to express support for the National Park Service's potential acquisition of approximately 55.31 acres in Ashe County, North Carolina along the Blue Ridge Parkway. Acquiring these lands would advance the public interest by enhancing public access, expanding recreational opportunities, and sustaining resources they provide.

Please do not hesitate to reach out if you have any questions.

Sincerely,

[OFFICIAL'S SIGNATURE]

[OFFICIAL'S NAME]

[OFFICIAL'S TITLE]

Cc: Tracy Swartout (tracy_swartout@nps.gov)
Becky Rinas (becky_rinas@nps.gov)
Nicolaus Craig (nick_craig@nps.gov)

Blue Ridge Parkway

Ashe and Wilkes Counties, North Carolina

Jumpinoff Rocks Donation

- Non-Federal lands to be acquired: approximately 121.35 acres +/-
 - Ashe County: approximately 55.31 acres +/-
 - Wilkes County: approximately 66.04 acres +/-

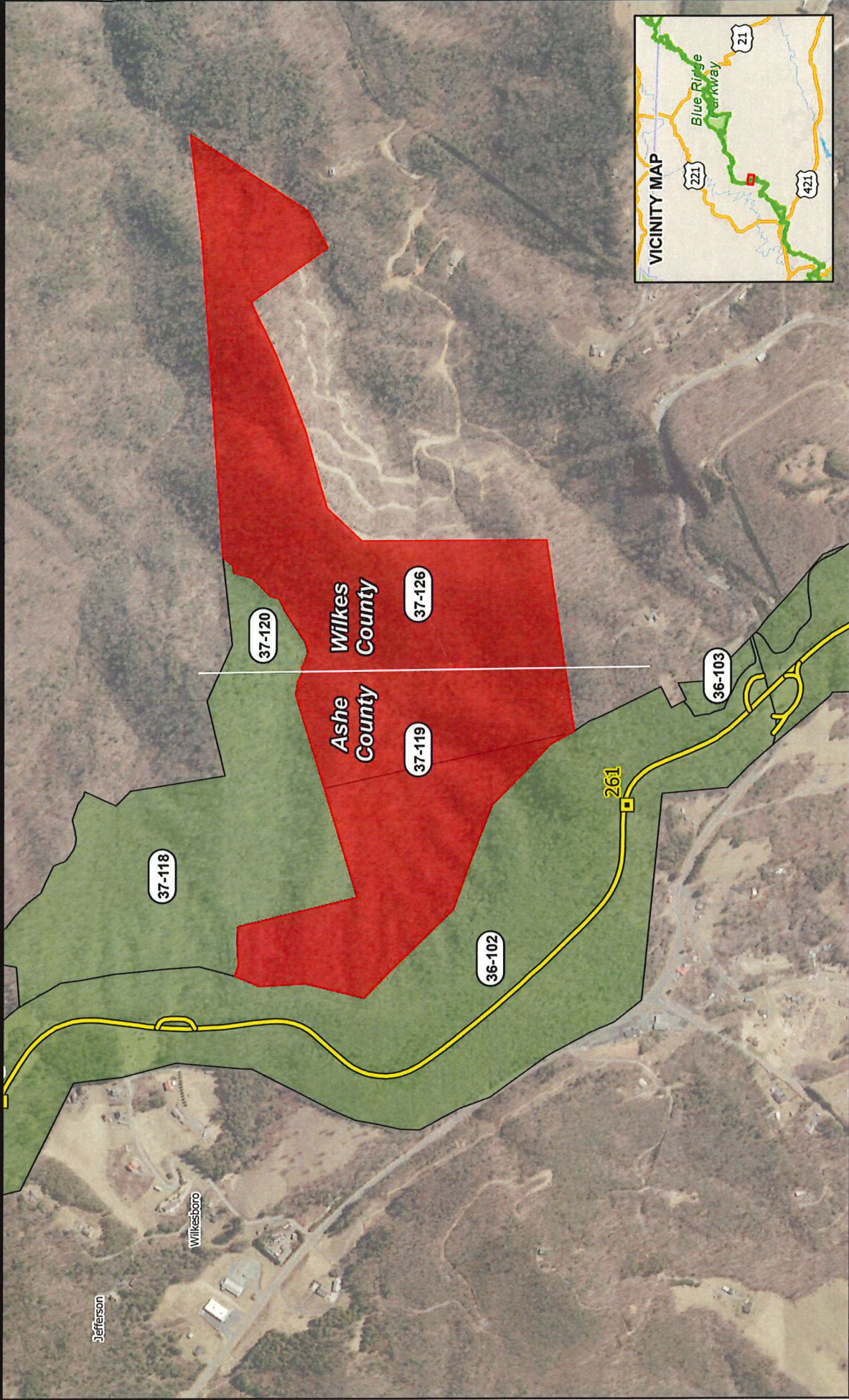
The United States of America, acting through the National Park Service (NPS), is considering acquiring approximately 121.35 acres +/- in Ashe and Wilkes Counties, North Carolina (approx. 55.31 acres in Ashe County and 66.04 acres in Wilkes County) for inclusion in the Blue Ridge Parkway.

The portion of the property located in Ashe County is identified as NPS tract 37-119 and the portion in Wilkes County is identified as NPS tract 37-126 on the following map. The subject property lies directly below the Jumpinoff Rocks Overlook, with portions—particularly on the eastern side—visible from the parkway. It includes the headwaters of Bear Den Branch, a high-quality trout water and tributary of the Yadkin River. Acquisition of this property would conserve watershed and scenic resources, preserve views integral to the Parkway experience, and provide opportunities to enhance public access and recreational use. The property's incorporation into the Blue Ridge Parkway would support long-term conservation and resource stewardship objectives.

Blue Ridge Parkway

Jumpinoff Rocks Land Acquisitions - Ashe and Wilkes Co, NC

National Trails Land Resources Program Center
National Park Service
U.S. Dept. of the Interior



Land Resources Division
Washington Support Office
Internal Map Exhibit
May 2026

North

0 1060 Feet

National Park Service Tracts
Federal Land (Fee)
Private

Proposed Acquisition
Blue Ridge Parkway Mileposts
Blue Ridge Parkway

VICINITY MAP

Property ownership and federal land status data shown is compiled from deeds, plats, surveys and other source data. This is not intended as a survey-quality drawing and should be used for general reference. Acreages, if noted, are derived from surveys, record deed information and office compilations.

Base map features (if displayed): Sources: Esri, TomTom, Garmin, FAO, NOAA, USGS, © OpenStreetMap contributors, and the GIS User Community
Project Name: NC.aprx

Spatial Reference: NAD 1983 2011 Contiguous USA Albers