

## Ann Clark

---

**From:** Patty Gambill  
**Sent:** Tuesday, September 12, 2017 9:18 AM  
**To:** Ann Clark  
**Cc:** Lansing VFRD; Lee Denny (Leeg92000@yahoo.com); Farmer, Anthony  
**Subject:** Sept. 18 BOC mtg  
**Attachments:** combined map.pdf; PondMtn\_Request map.pdf

Ann,

Please add me to the Sept. 18 agenda to provide an update on the citizen petition to change from Lansing to Pond Mountain county service and insurance districts. Information for the Board of Commissioner's packet follows:

The Lansing and Pond Mountain volunteer fire and rescue departments met on September 5th to discuss the citizen petition requesting that a portion of the Lansing Fire Service (tax) and insurance districts be changed to the Pond Mountain Fire Service (tax) and insurance districts.

Both departments stated that they wanted to do what is in the best interest of the citizens and jointly agreed that property owners that actually signed the petition THAT ARE NOT IN AN EXISTING INSURANCE DISTRICT should be changed from Lansing's tax and insurance district to Pond Mountain's tax and insurance district. Those areas are depicted as the pink areas ABOVE the solid orange line on the attached combined map. The areas in pink below the solid orange line are already within a rated insurance district and would not be changed.

PLEASE NOTE: There are a few parcels within the petition area for which signatures of the property owner(s) did not appear on the petition. Because of the nature of service and insurance district lines, these areas would be changed as well.

Attached maps:

Standalone map - Lansing VFRD district in blue Standalone map - Pond Mountain VFRD in purple Standalone map - Citizen petition area Combined map - pond Mountain VFRD in yellow, Lansing VFRD in olive green; the area of citizen petition in pink and green. The solid orange line represents Lansing VFRD's existing 6-mile rated insurance district. There are approximately 259 structures in the pink and green area above the solid orange line. NOTE: The green area was intended to depict the parcels with structures but upon closer examination, I think a few parcels with structures were overlooked when the map was created.

The taxable value of the properties above the solid orange line is \$11,309,400.

Based on their current fire tax rate of .04 per \$100 valuation this equate to a \$4,523.76 revenue loss for Lansing VFRD if the property is changed Based on their current fire tax rate of .08 per \$100 valuation this equate to a \$9,047.52 revenue increase for Pond Mountain VFRD if the property is changed

The taxable value of the properties below the solid orange line is \$1,540,900.

There would be no loss or gain of revenue from this area as the departments agreed this area should remain in Lansing's existing 6-mile insurance district and Lansing's county service (tax) district.

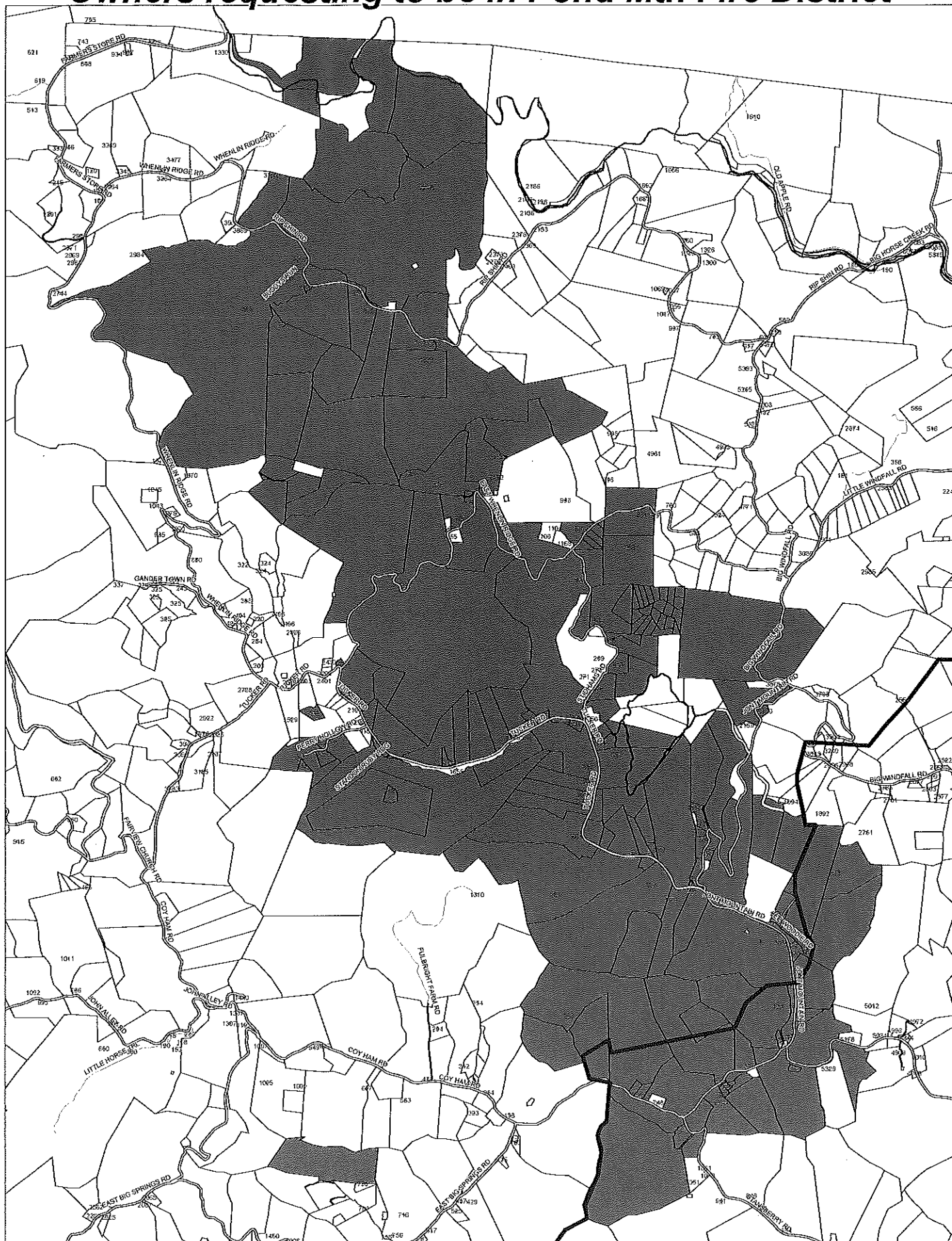
If the board wishes to proceed with changes to the service district, a report must be created containing information outlined in N.C. G.S. 153A-304. The report must be made available to the public for two weeks prior to a public hearing. A public hearing must be scheduled and advertised and, following the public hearing, the board would vote on a resolution to change the service district. If the change is approved, a resolution to modify Pond Mountain's 6-mile

insurance district would also need to be approved. The insurance district change would take effect once it is processed by the NC Department of Insurance and the county service district (tax) change would take effect July 1, 2018.

Patty Gambill  
Emergency Management Coordinator  
County of Ashe  
(336) 846-5521

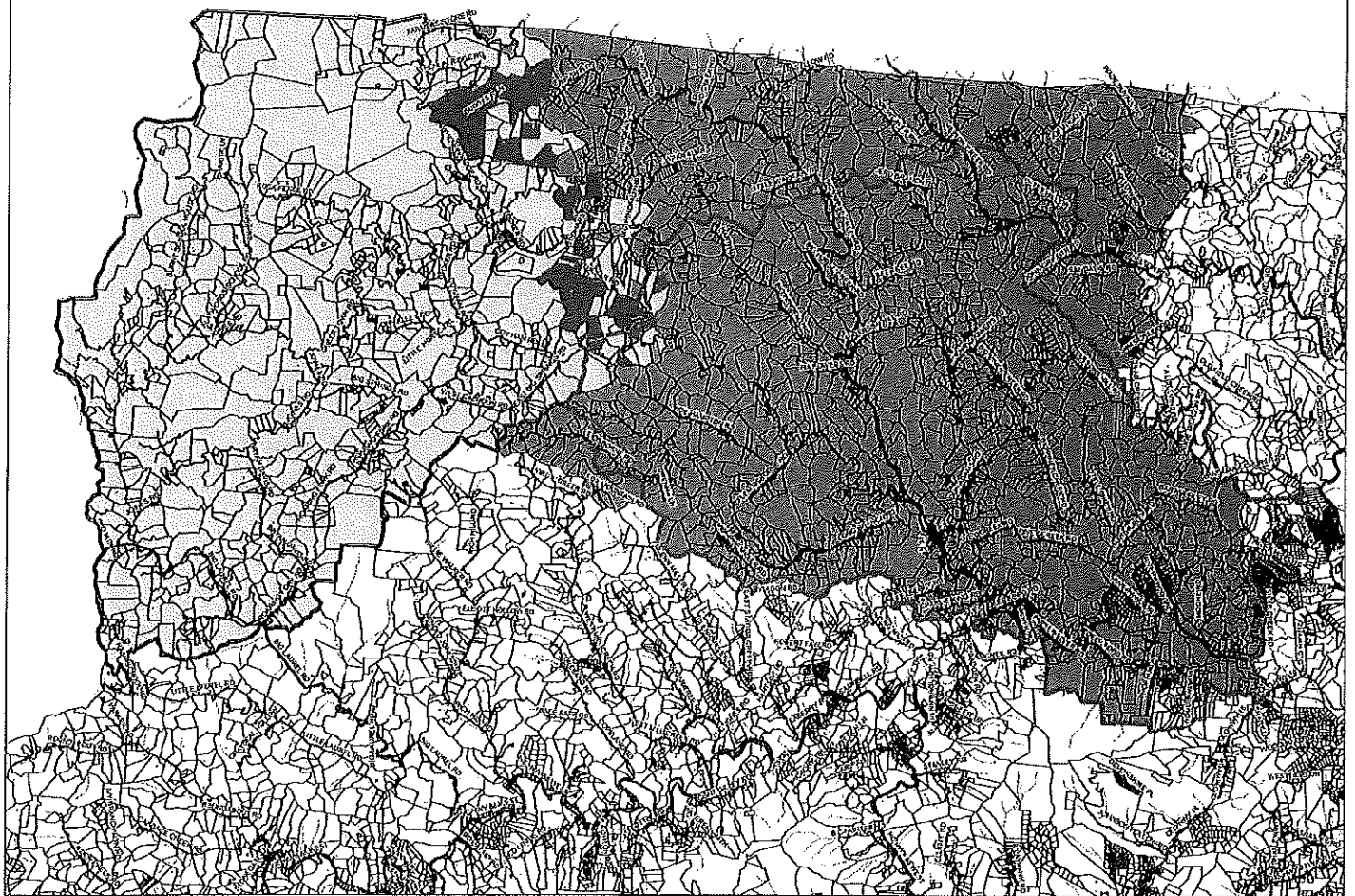
Pursuant to North Carolina General Statutes Chapter 132, Public Records, this electronic mail message and any attachments hereto, as well as any electronic mail message(s) that might be sent in response to it may be considered public record and as such are subject to request and review by, and disclosure to, third parties.

## Owners requesting to be in Pond Mtn Fire District



**Lansing- Pond Mountain Fire Districts**

*parcels highlighted with addressed buildings*



This is a black and white map of the United Kingdom, showing a network of roads. The map is oriented with North at the top. Major roads are highlighted with thick black lines, while smaller roads are shown as thin black lines. The map includes labels for various towns and cities, such as London, Manchester, and Birmingham. The map is a high-contrast, black and white image, likely a photocopy or a scan of a printed map.

176 • 2009年

Pond Mountain Fire Insurance District

