

Ann Clark

From: Patty Gambill
Sent: Wednesday, January 16, 2019 8:20 AM
To: Ann Clark; Barbara McCoy
Subject: BOC agenda item
Attachments: 20190116082527604.pdf

Ann,
Can you please place approval of updates to the Ashe County Emergency Operations Plan on the agenda for February 4, 2019?

Per previous request of the commissioners, I have attached only the pages that are being updated.

Patty

Patty Gambill
Emergency Management Coordinator
County of Ashe
(336) 846-5521

Pursuant to North Carolina General Statutes Chapter 132, Public Records, this electronic mail message and any attachments hereto, as well as any electronic mail message(s) that might be sent in response to it may be considered public record and as such are subject to request and review by, and disclosure to, third parties.

ASHE COUNTY

EMERGENCY OPERATIONS PLAN

Prepared By:

ASHE COUNTY EMERGENCY MANAGEMENT

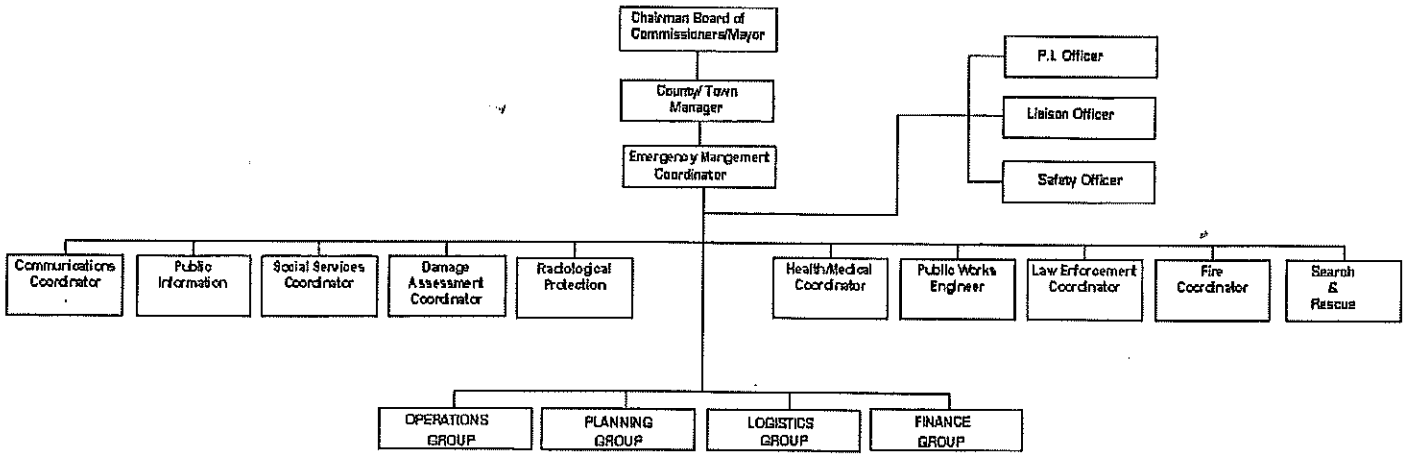
Update February 2019



EM Coordinator Patty Gambill
Ashe County Courthouse
150 Government Circle Suite 2400
Jefferson, NC 28640
(336) 846-5521
fax: (336) 846-5523
patty.gambill@ashecountygov.com

014	Updated plan contacts, notifications	03-22-17	<i>Patty Gambill</i> Emergency Management Coordinator, Patty Gambill
015	Updated plan contacts, notifications, ICS chart	02-01-19	<i>Patty Gambill</i> Emergency Management Coordinator, Patty Gambill

**BASIC PLAN
APPENDIX 1
ORGANIZATIONAL STRUCTURE
FOR EMERGENCY OPERATIONS PLAN**



ANNEX C
ANNEX C
APPENDIX 3

EMERGENCY NOTIFICATION LIST

<u>Name or Organization</u>	Primary	Secondary
County Warning Point	911	910 5000/910 5000
EM Coordinator, Patty Gambill		
NC Area EM Coordinator Tiawana Ramsey		
*NC Warning Point		
Interim County Manager Adam Stumb		
Sheriff Phil Howell		
Commissioner Chair Todd McNeill		
Commissioner Vice Chair William Sands		
Commissioner Larry Rhodes		
Commissioner Paula Perry		
Commissioner Larry Dix		
Red Cross Liaison Brian Womack		
WJ Town Manager Brantley Price		
Interim WJ Police Chief Brad Jordan		
Jeff. Town Manager Cathy Howell		
Jeff. Police Chief David Witherspoon		
Lansing Town Manager Marci Little		
Superintendent, Phyllis Yates		
Agriculture Ext. Agent Micah Orfield		
Social Services Dir. Tracie McMillan		
Health Dept. Jennifer Schroeder		
Pres. Fire Assoc. Leonard Houck		
Captain, Rescue Squad Rob Blevins		
Helton Ambulance Dir. Denver Caudill		
Highway Patrol		

ANNEX E

- A. The Sheriff is responsible for the direction and control of law enforcement activities during emergencies.
- B. Assistant Coordinators for Law Enforcement are Chiefs of Police in their respective municipalities.
- C. Law Enforcement is the lead agency in all suspected acts of terrorism, i.e. controlling potential crime scenes until the FBI is contacted and assumes lead. The FBI has primary responsibility for the investigation of all domestic and international terrorism incidents. The Appalachian District Health Department has the lead role for all disease related acts of terrorism until Federal Agencies assumes lead. (see APPENDIX BIOLOGICAL-TERRORISM and APPENDIX 8 TERRORISM in this plan).

V. CONTINUITY OF GOVERNMENT

- A. The chain of command within an organized law enforcement organization is established by senior rank and position to ensure continuous leadership and does not change during emergency operations.
- B. The line of succession is:
 - 1. Sheriff
 - 2. Chief Deputy
 - 3. Captain
- C. Records vital to the law enforcement function will be protected during emergency situations.

VI. ADMINISTRATION AND LOGISTICS

- A. Records and Reports -The sheriff will maintain records and reports including expenditure reports, detailing law enforcement operations and activities during the emergency.
- B. Communications - The communications network between County and municipal law enforcement agencies will make maximum use of available radio and telephone communication resources.
- C. Vehicle Passes - The decision to require passes will rest with the Chairman, County Board of Commissioners. The order for requiring passes will be issued from the EOC. The law enforcement agencies will be responsible for issuing passes upon the direction of the EOC. A sample, temporary pass and permanent "Official Vehicle" pass is shown in APPENDIX 2, VEHICLE PASSES.