



---

**For Immediate Release: September 24, 2019**

**Contact: Cathy Barr, Director Economic Development (336) 846-5535**

STATE OF NORTH CAROLINA  
COUNTY OF ASHE

**NOTICE OF PUBLIC HEARING**

**NOTICE** is hereby given that the Ashe County Board of Commissioners will hold a public hearing on Monday, October 7<sup>th</sup>, 2019 at 6:00 p.m. in the County Commissioners' Meeting Room located on the third floor of the Ashe County Courthouse, 150 Government Circle, Jefferson NC 28640. The purpose of the public hearing will be to receive public comments on an economic development proposal to appropriate \$36,600.00 for professional engineering services on Parcel ID 19227-079 located adjacent to 180 Chattyrob Lane property, West Jefferson, NC. The proposed professional services will help determine if the property is suitable for industrial development prior to the land purchase. This notice is published pursuant to the provisions of NCGS 158-7.1.

This 24<sup>th</sup> day of September, 2019.

Cathy Barr, Director  
Ashe County Economic Development

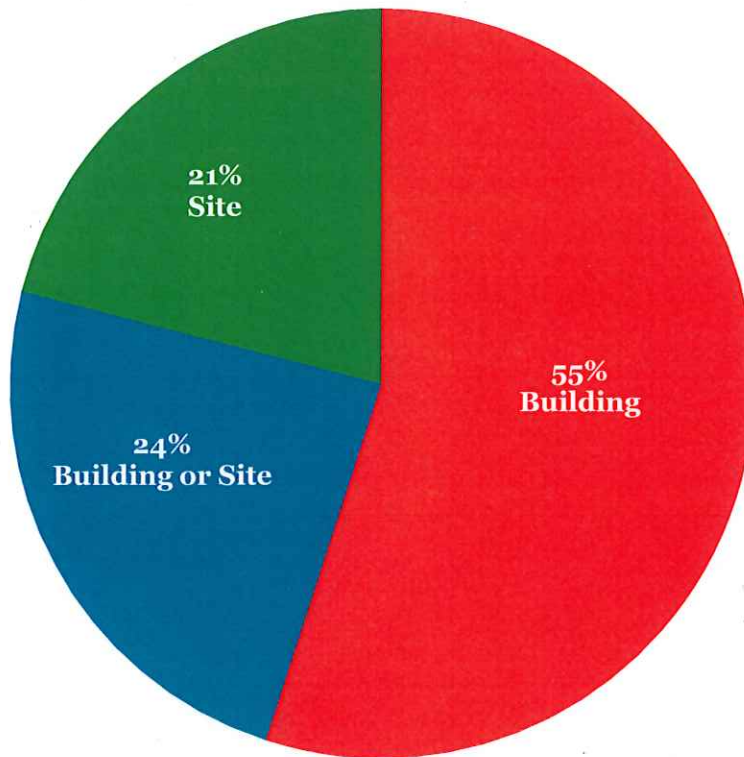


**Ashe County Economic Development Update**  
*Industrial Site Development*

## **Bringing New Industry to Ashe**

- ❖ When a company decides to relocate or expand they look for an existing building or a “shovel ready” site.
- ❖ There were 415 NC projects last year involving new industry or industry expansion.
- ❖ Because Ashe does not have an available site or building, Ashe was NOT considered for any of the 415 projects.
- ❖ The process is like shopping for a car only to realize you have arrived at a car lot that has NO cars
- ❖ If we want to attract new industry, it is critical that we develop a “shovel ready” industrial site.

## North Carolina Industrial Product Demand



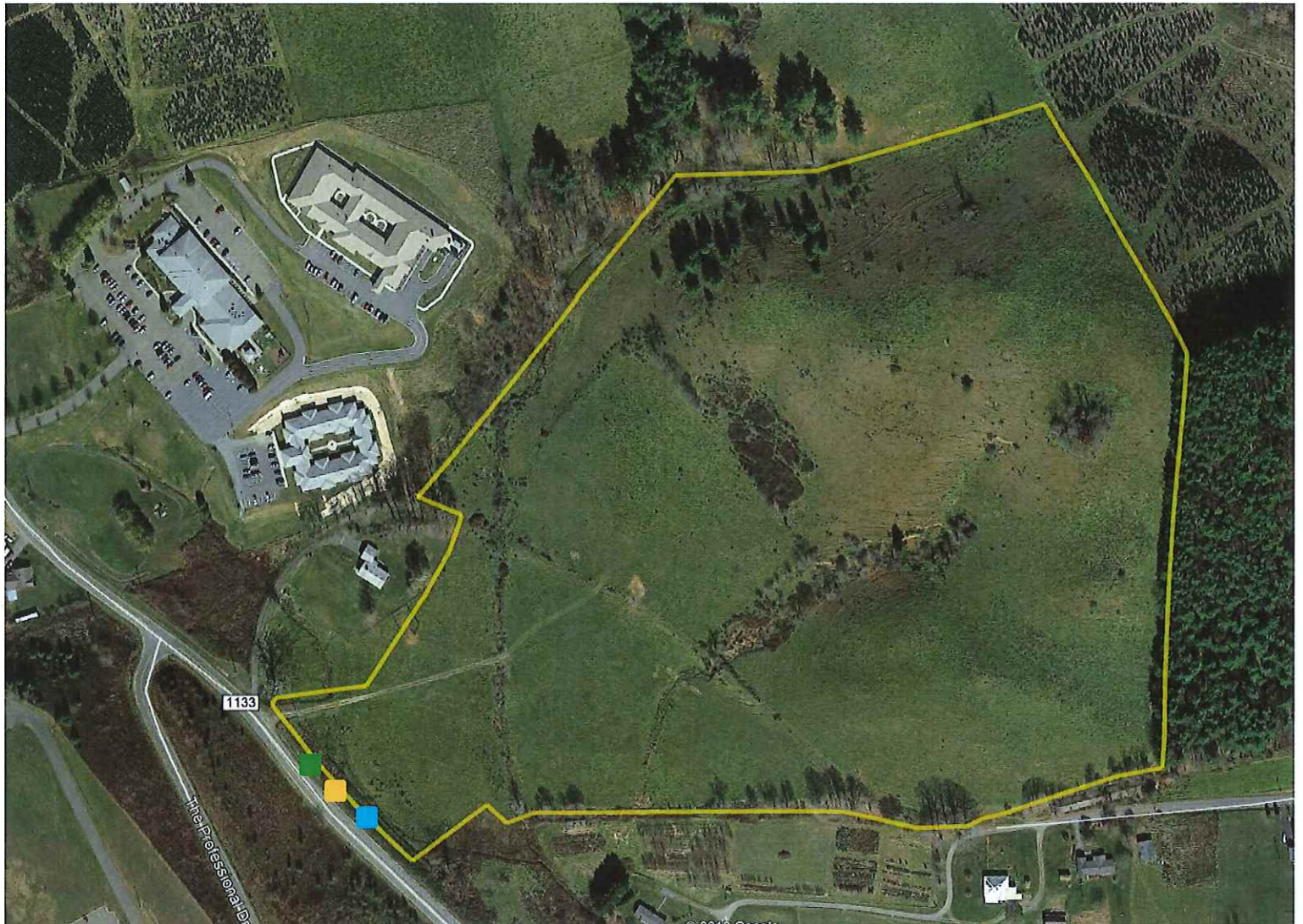
Scope – 415 Projects

- 55% Building
- 24% Building or a Site
- 21% Site

# **Economic Development Land Search**

- ❖ For the past year Economic Development has been searching for land suitable for industrial development.
- ❖ A partial list of purchase criteria includes at least 10 buildable acres, nearby water, sewer, 3 phase power, and fiber.
- ❖ After assessing 10 tracts of land, a 41.88 tract of land located adjacent to 180 Chattyrob Lane best fits the criteria.





- Phase 3 Power
- Gravity Sewer
- Water

## Proposed Land for Industrial Site Development





**Parcel ID**

# **Economic Development Appropriation Request**

- ❖ Prior to purchasing the land, professional engineering services including planning, environmental and geotechnical are needed to determine if the land is suitable for purchase and the development of one or more industrial sites.
- ❖ Therefore, I am requesting board approval of an economic development appropriation of \$36,600 to perform the initial engineering services.